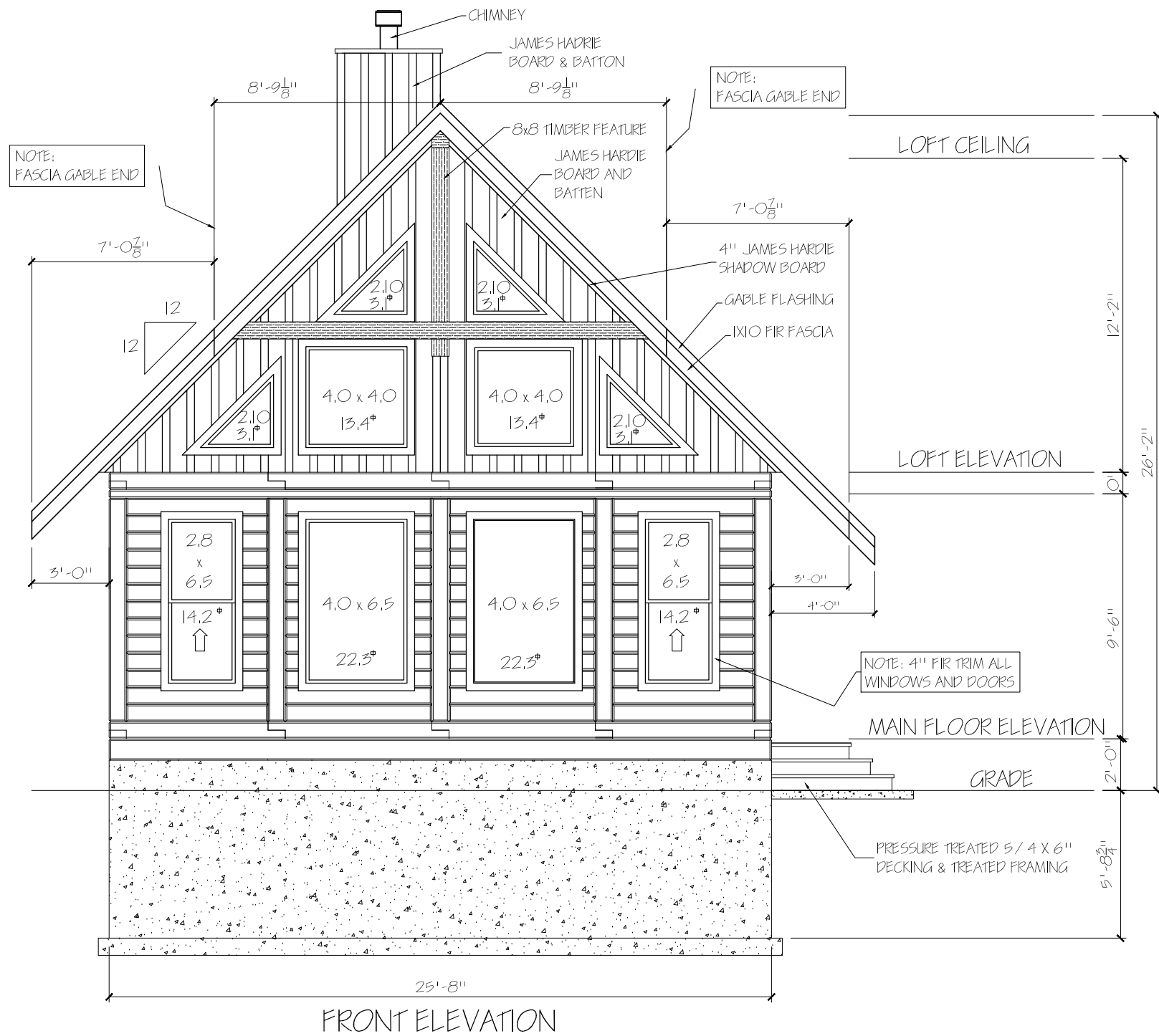


COTTAGE CLUB GENERAL NOTES:

THE BUILDING TOP OF JOIST ELEVATION TO BE SET AT 0.60M FROM THE HIGHEST NATURAL ON SITE GRADE SURVEYED AT THE PERIMETER OF THE BUILDING FOOTPRINT**

- TRUE SOLID WOOD TIMBER FRAME DETAILS ARE MANDATORY
- MINIMUM 12" ROOF OVERHANGS WITH MIN. 8" FASCIA
- BOX IN ALL FURNACE OR FIREPLACE FLUES.
- MAX. 24" OF PARGING SHOWING ON ANY ELEVATION



EXTERIOR FINISHES

29 GAUGE METAL ROOFING
TOUGH RIB
COLOUR:

4" HARDIETRIM SHADOW BANDS
UNDER EAVES
COLOUR:

HAVEN TIMBERHOMES WALL
SYSTEM - EXPOSED LOGS
COLOUR: BROWN TONE LIGHT

VINYL WINDOWS
COLOUR:

4" FIR WINDOW / DOOR TRIM
COLOUR:

FIBERGLASS EXTERIOR DOORS
(WOOD GRAIN)
COLOUR: NATURAL

IXIO FIR FASCIA (2X6 SUB FASCIA)
COLOUR:

PREFINISHED METAL SOFFIT
COLOUR:

7" HARDIEPLANK BOARD & BATTEN
COLOUR:

EXTERIOR POSTS TO BE PINE
COLOUR: BROWN TONE LIGHT

EXTERIOR RAILINGS TO BE CEDAR
C/ W BLACK METAL PICKETS
COLOUR: NATURAL

NOTE: FINISHED GRADE
MAY VARY. BUILDER TO ADJUST
FOUNDATION DEPTHS, #OF
STEPS, ETC AS REQUIRED
TO SUIT SITE CONDITIONS.

BUILDER TO PROVIDE POSITIVE DRAINAGE
AWAY FROM THE BUILDINGS ON ALL SIDES
& TO MAINTAIN 8" MINIMUM CLEARANCE
TO GRADE FROM ANY UNTREATED WOOD/
CLADDING MATERIAL.

NOTE:
WINDOW SUPPLIER IS STARLINE WINDOWS.
GLAZING IS 4" NARROWER AND 4" SHORTER
THAN NOTED WINDOW SIZE.
GLAZING AREA (SQ.FT.) IS NOTED ON
EACH WINDOW

LIMITING DISTANCE = 14.5M / 2 = 7.25M
WALL AREA = 462 SF (42.9M²)

MAX. ALLOWABLE OPENINGS = ____% (462SF)
ACTUAL OPENINGS = 19% (88.25Q.FT.)



SCALE: 3/16" = 1'-0" DRAWN BY: P HALPER / K5

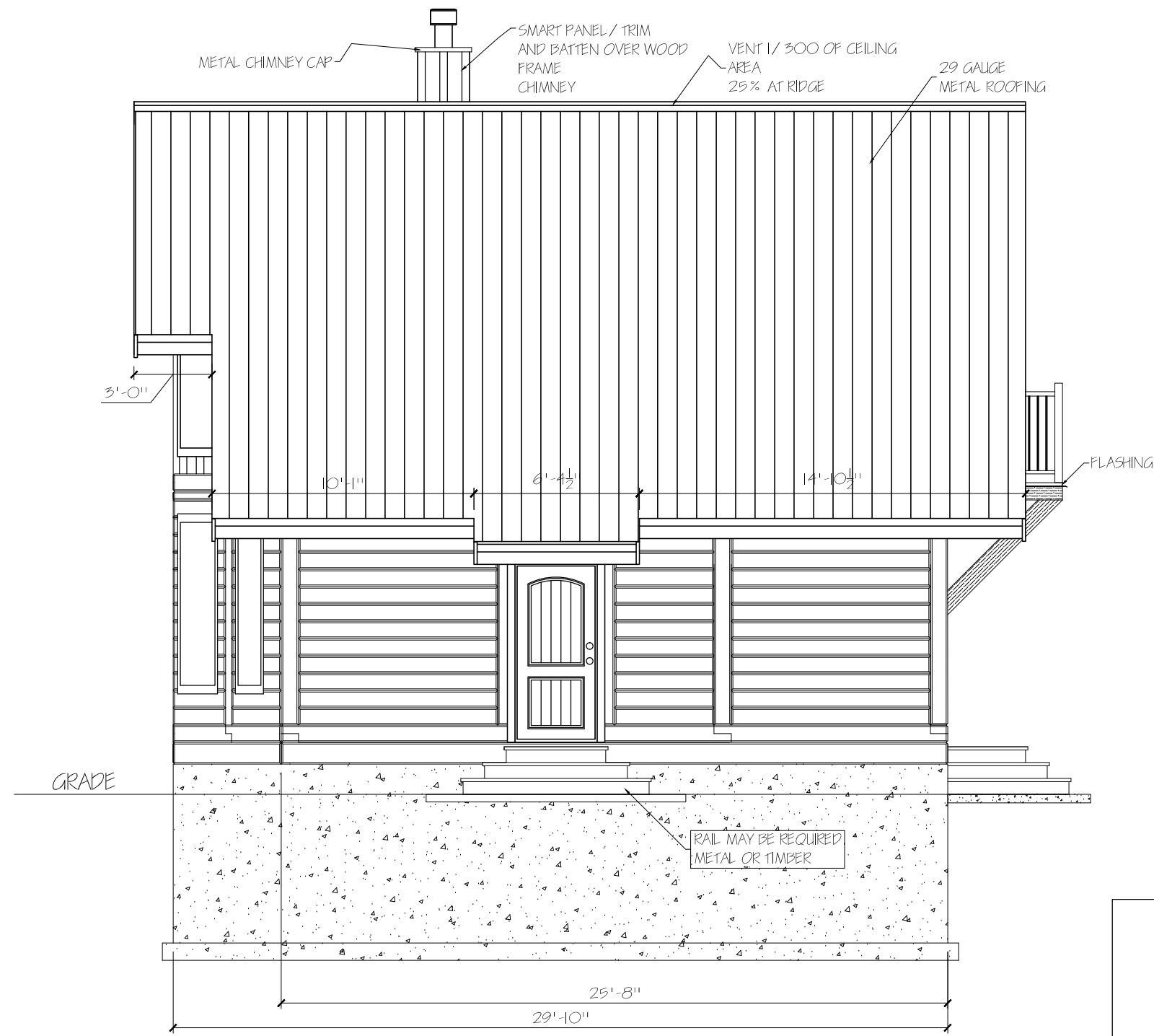
DATE: 16 MAY 2012 REVISED:

BASIC COTTAGE I

REV

FRONT ELEVATION

DRAWING NUMBER
GL-001



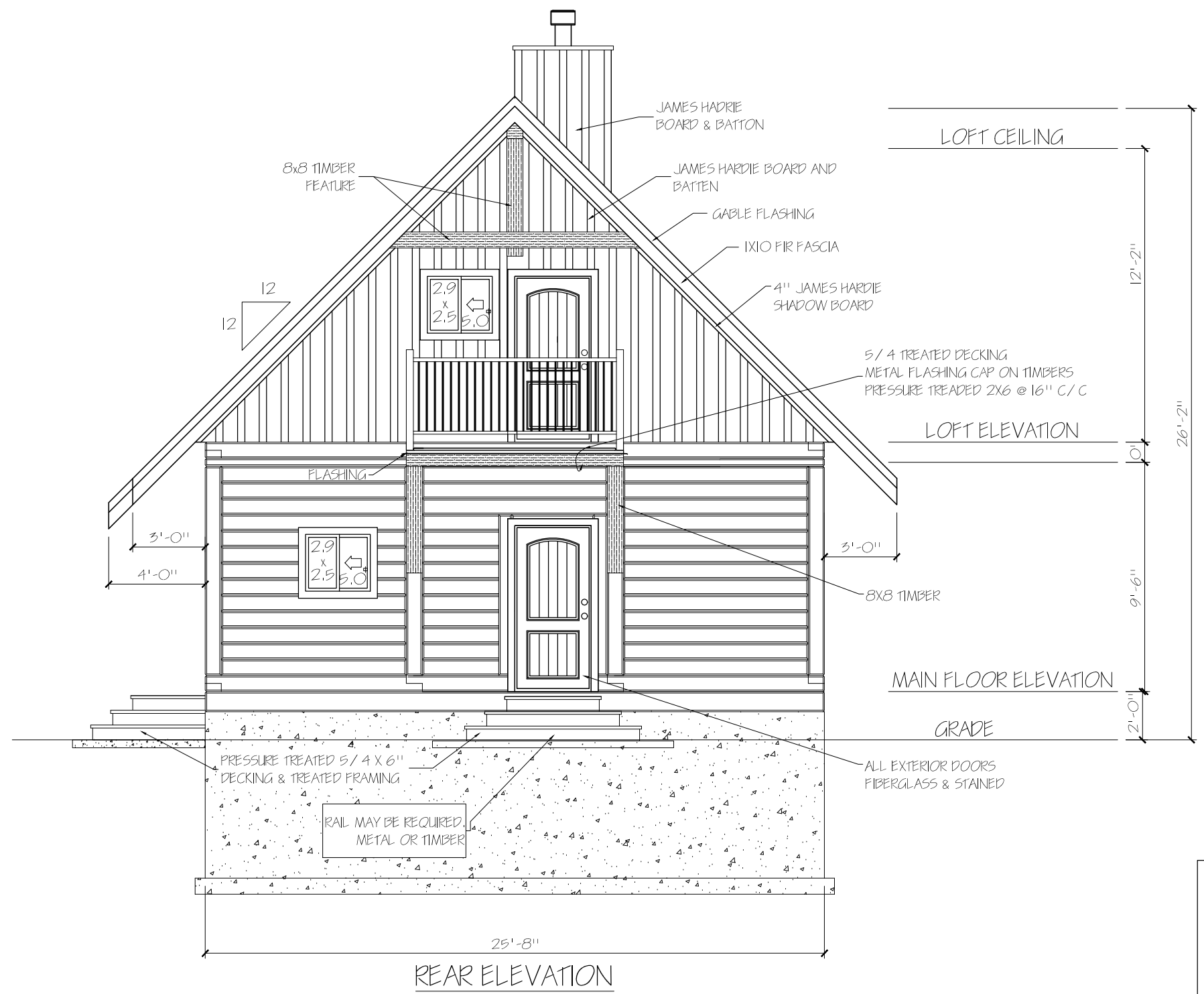
RIGHT ELEVATION

LIMITING DISTANCE = 4.41M / 2 = 2.2M
 WALL AREA = 286.6 SF (26.6M²)
 MAX. ALLOWABLE OPENINGS = ____% (286.6SF)
 ACTUAL OPENINGS = 1.6% (4.6 SF)



SCALE: 3/16" = 1'-0"	DRAWN BY: P HALPER / K5
DATE: 16 MAY 2012	REVISED:
BASIC COTTAGE I	
RIGHT ELEVATION	DRAWING NUMBER al-002

REV

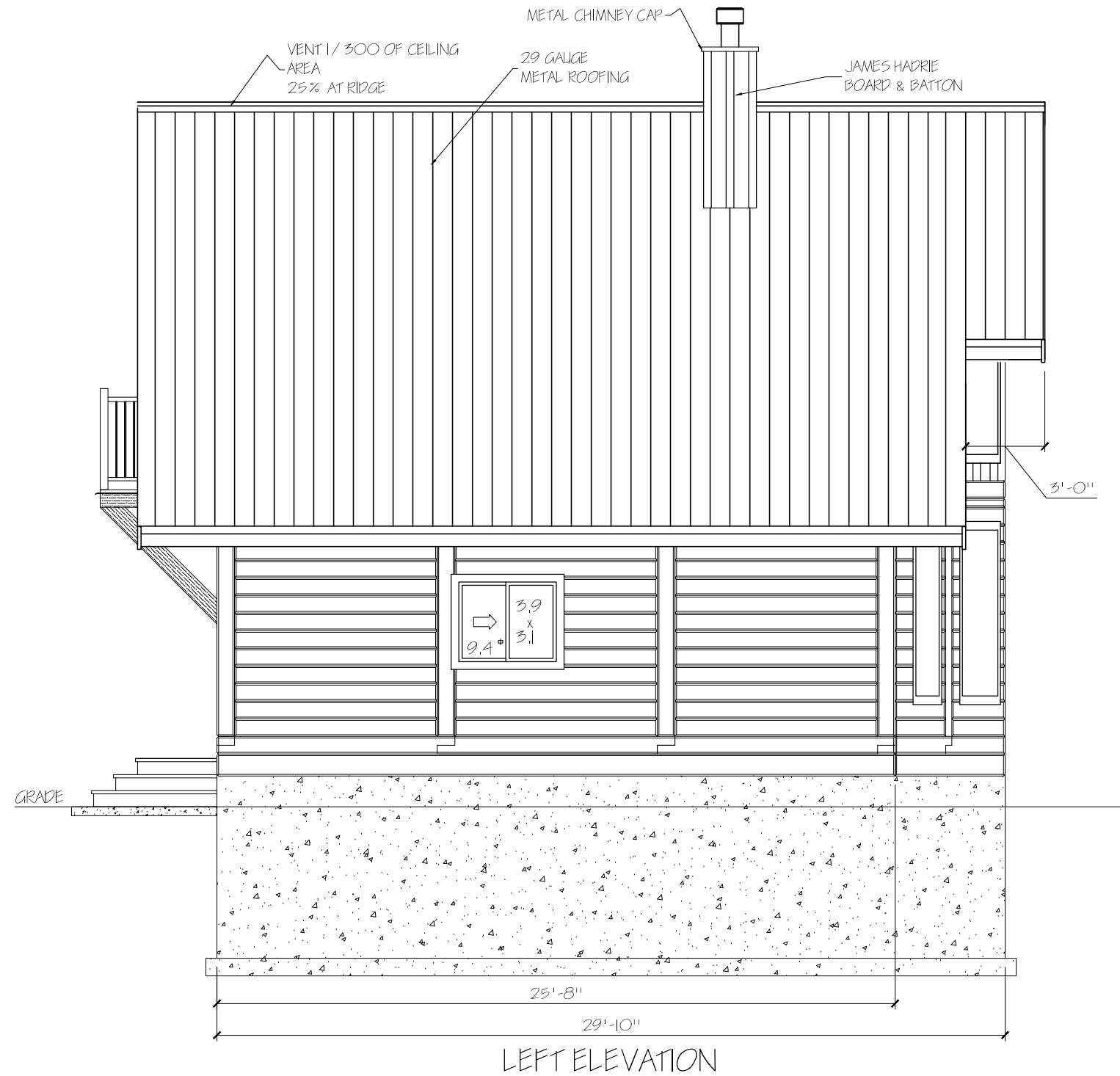


LIMITING DISTANCE = 15.65M / 2 = 7.83M
 WALL AREA = 460.45F (42.8M²)
 MAX. ALLOWABLE OPENINGS = ____% (460.45F)
 ACTUAL OPENINGS = 4.2% (19.2 5F)



SCALE: 3/16" = 1'-0"	DRAWN BY: P HALPER / K5
DATE: 16 MAY 2012	REVISED:
BASIC COTTAGE I	
REAR ELEVATION	DRAWING NUMBER AL-003

REV

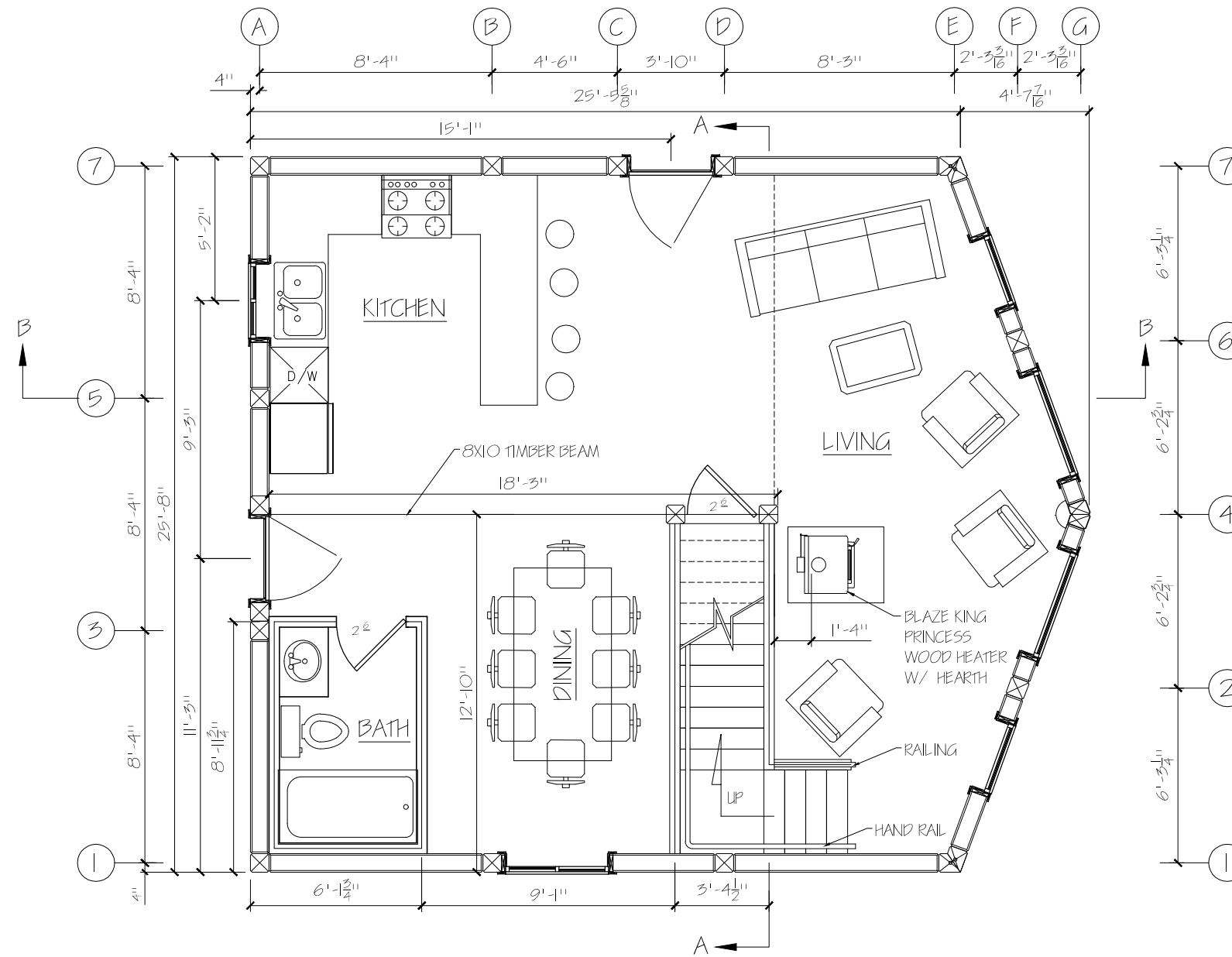


LIMITING DISTANCE = 2.4M / 2 = 1.2
 WALL AREA = 286.6 SF (26.6M²)
 MAX. ALLOWABLE OPENINGS = 7% (20.06SF)
 ACTUAL OPENINGS = 3.3% (9.45SQ.FT.)



SCALE: 3/16" = 1'-0"	DRAWN BY: P HALPER / K5
DATE: 16 MAY 2012	REVISED:
BASIC COTTAGE I	
LEFT ELEVATION	DRAWING NUMBER AL-004

REV



MAIN FLOOR PLAN
 FLOOR AREA INSIDE 601 SQFT



SCALE: 3/16" = 1'-0" DRAWN BY: P. HALPER / KS

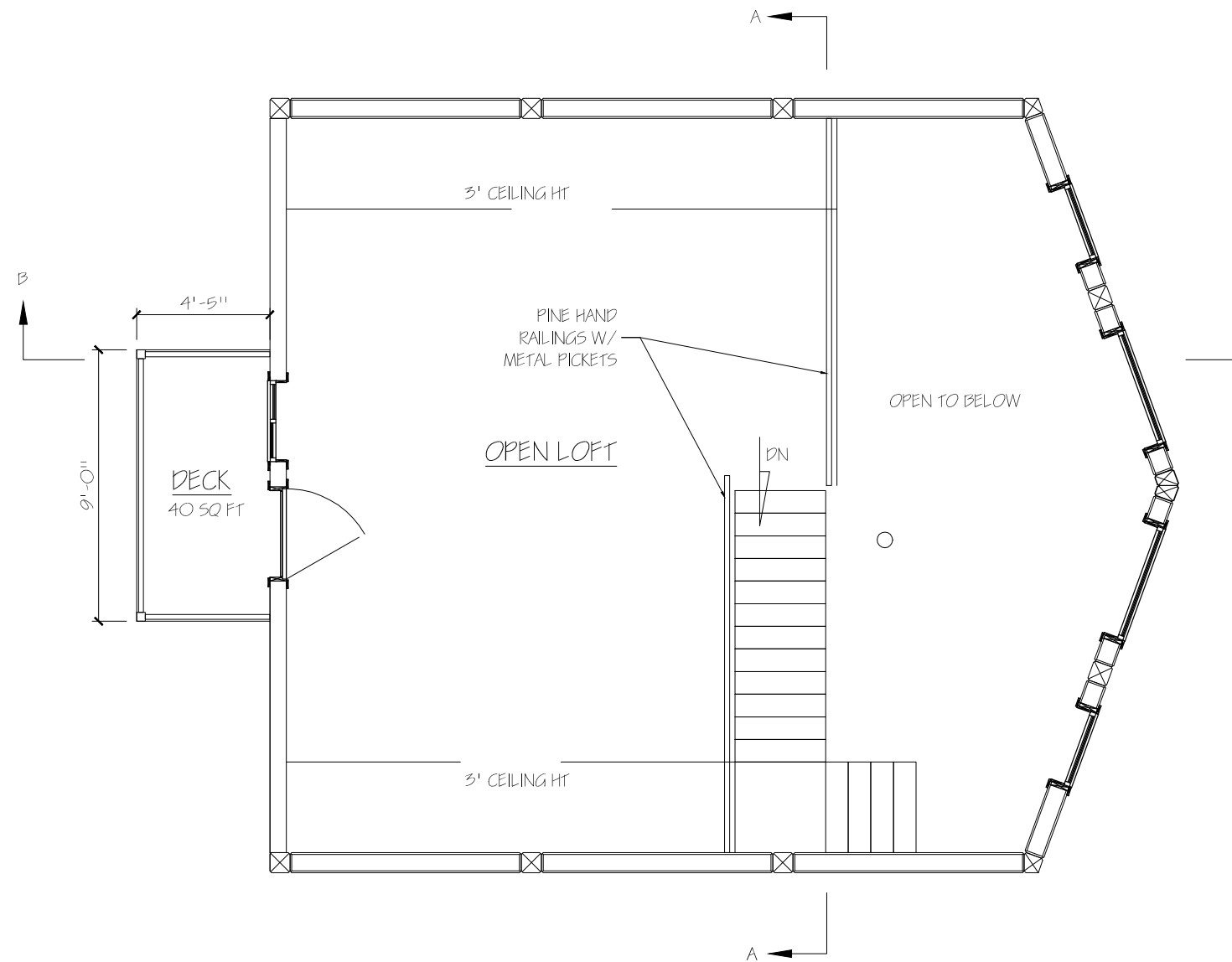
DATE: 16 MAY 2012 REVISED:

BASIC COTTAGE I

REV

MAIN FLOOR PLAN

DRAWING NUMBER
 AL-005



LOFT FLOOR PLAN
FLOOR AREA INSIDE 349 SQ FT



SCALE: 3/16" = 1'-0" DRAWN BY: P. HALPER / K5

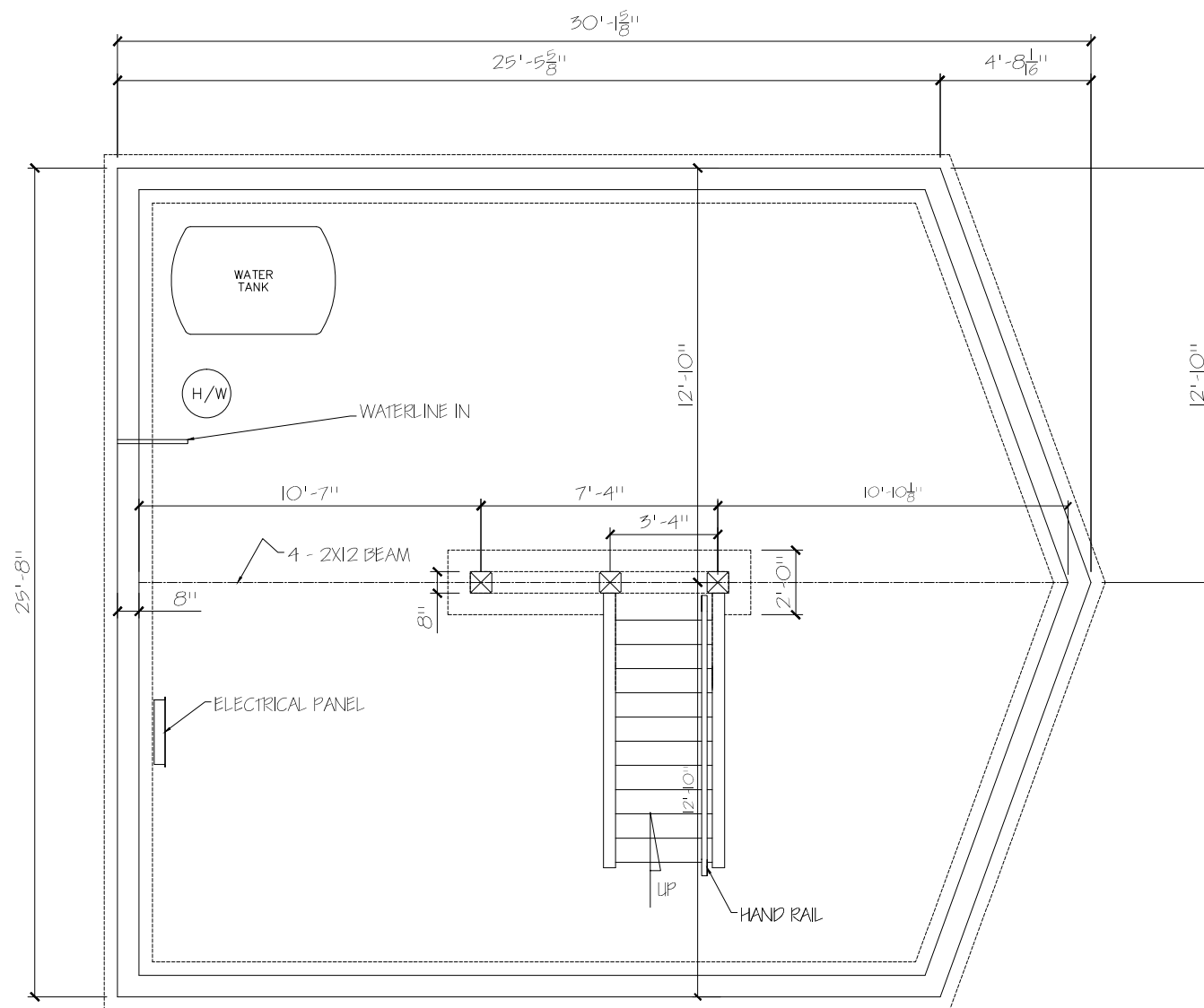
DATE: 16 MAY 2012 REVISED:

BASIC COTTAGE I

REV

UPPER FLOOR PLAN

DRAWING NUMBER
AL-006



FOUNDATION PLAN



SCALE: 3/16" = 1'-0"		DRAWN BY: P HALPER / KS	
DATE: 16 MAY 2011		REVISED:	
BASIC COTTAGE I		24 X 24	REV
FOUNDATION PLAN		DRAWING NUMBER GL-007	

CONSTRUCTION DATA

WALLS

TYPICAL EXTERIOR WALL

HAVEN TIMBERHOMES WALL SYSTEM,
C/ W FIRE RETARDANT COATING
HARDIEPLANK BOARD AND BATTE GABLES

<u>2X8 WALL</u>	<u>2X4 WALL</u>
1X6 T&G PINE	1X6 T&G PINE
6 MIL POLY	2X4 STUD
R28 BATT INSULATION	1X6 T&G PINE
2X8 STUD	
3/ 8" OSB	
HALTEX TARPAPER	
JAMES HARDIE BOARD AND BATTEN (SEE ELEVATIONS FOR LOCATIONS)	

FOUNDATION WALLS

PARGING
8" CONG. FOUNDATION WALLS
18"X8" CONCRETE FOOTING R/ W 2-10M CONT.
PERIMETER WEEPING TILE W. FILTER FABRIC
& 12" WASHED GRAVEL
SUITABLE UNDISTURBED SOIL OR ENG. FILL
BELOW FROST LEVEL

FLOORS

UPPER FLOOR ASSEMBLY

FINISH FLOORING
3/ 4 T&G PLYWOOD GLUED & NAILED
2X10 SPF FLOOR JOISTS
1X6 T&G PINE CEILING

FLOOR OVER HEATED CRAWLSPACE

FINISH FLOORING
3/ 4" T&G PLYWOOD GLUED & NAILED
2X10 SPF FLOOR JOISTS

CRAWLSPACE FLOOR

1-1/ 2" SLURRY SKIM COAT SLAB
6 MIL POLY. MOISTURE BARRIER
MIN. 4" COMPACTED GRAVEL
SUITABLE UNDISTURBED SOIL

DECK & EXTERIOR STAIRS

5/ 4 X 6 PRESSURE TREATED DECKING
2X6 PRESSURE TREATED FRAMING AS PER
FRAMING PLANS SLOPED 1/ 8" PER FT

ROOFS

TYPICAL ROOF
METAL ROOFING
FELTEX UNDERLAYMENT
1/ 2" PLYWOOD SHEATHING W/ H-CLIPS
ENG. PARALLEL CPRD TRUSSES AS PER SHOP DRAWINGS
R32 ROXOL BRAND BATT
6 MIL POLY VAPOUR BARRIER
1X6 T&G PINE

OTHER

EAVE CONSTRUCTION

FASCIA: SEE EXTERIOR FINISHES
SOFFITS: NON-VENTING PREFIN. METAL ON SIDE'S
-VENTING PREFINISHED METAL ON FRONT & BACK'S
CONTINUOUS RIDGE VENT

OVERHANG CONSTRUCTION

GABLE END FRAMING FOR OVERHANGS MUST HAVE AN
APPROVED LOCK-OUT SYSTEM
(DROPPED GABLES WITH LADDER SYSTEM)

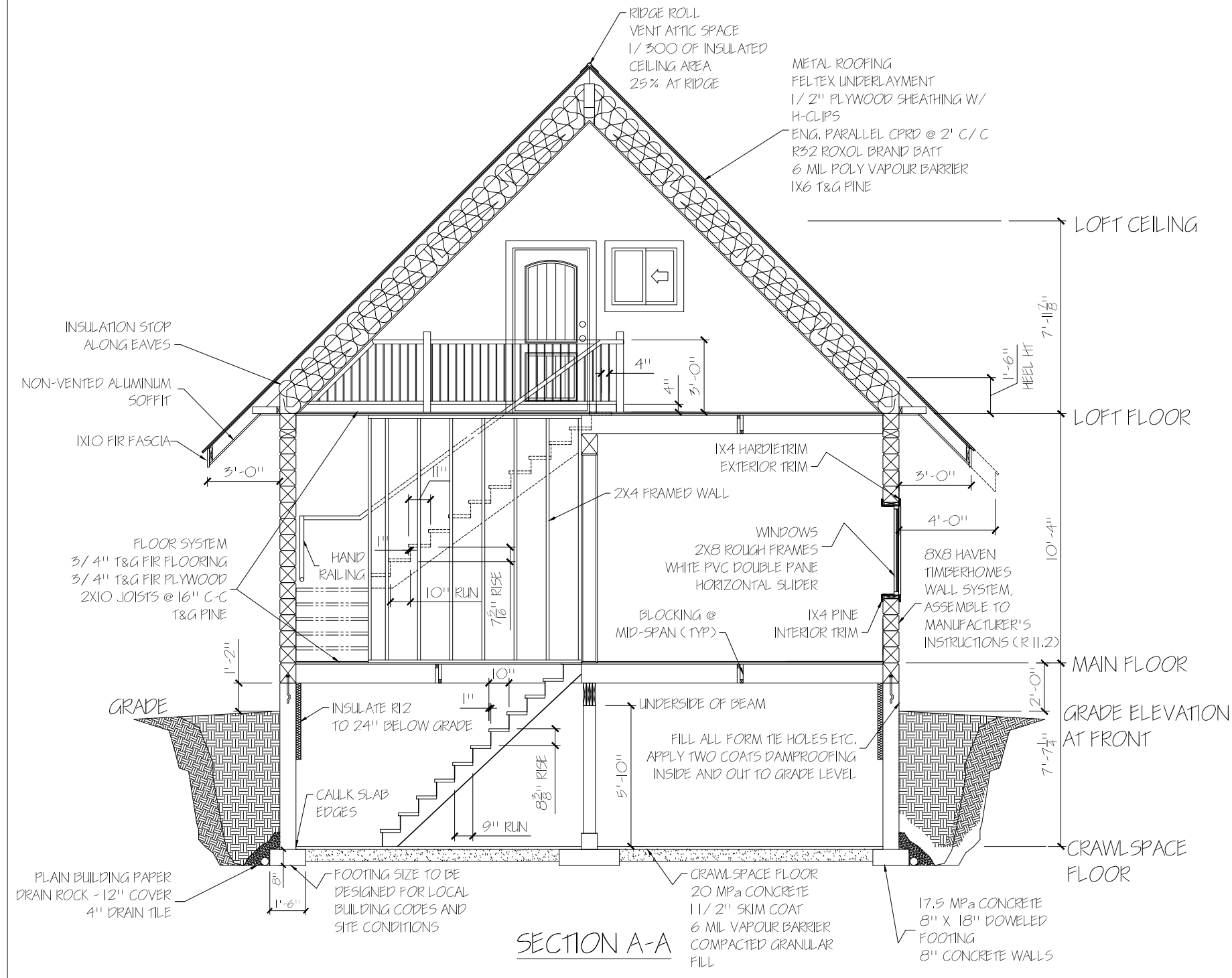
WINDOWS

2X8 ROUGH FRAMES
WHITE PVC DOUBLE PANE

SCOPE OF ENGINEERING

TRUSS SUPPLIER
-ROOF TRUSS SUPPLIER TO SUPPLY SHOP
DRAWINGS OF ROOF FOR ON SITE CONSTRUCTION

GEOTECHNICAL ENGINEERING
-TO CONFIRM BEARING CAPACITY OF SOILS
-TO DESIGN WEEPING TILE LAYOUT & DISCHARGE SYSTEM



STRUCTURAL AND FRAMING CRITERIA

LOADS: ROOF LIVE LD = 47 PSF, ROOF DEAD LD = 15 PSF
FLOOR LIVE LD = 40 PSF, FLOOR DEAD LD = 12 PSF
WIND / SNOW LD = AS PER AB BUILDING CODE

ASSUMED SOIL BEARING CAPACITY = 2000 PSF

BEAMS, FLOOR JOISTS, & PLATES TO
BE #2 D FIR (OR BETTER), UNLESS NOTED OTHERWISE

FRAMING LUMBER TO BE KILN DRIED SPF #2 EQUAL OR
BETTER.

JOISTS SHALL BE DOUBLED UNDER PARALLEL PARTITIONS
OVER 6" LONG JOIST PLACEMENT TO ACCOMMODATE
HEATING AND PLUMBING LAYOUTS AS DETERMINED BY THE
HEATING AND PLUMBING CONTRACTORS PRIOR TO FRAMING.

WOOD IN CONTACT WITH CONCRETE TO BE DAMPPROOFED
WITH 6 MIL POLY OR OTHER APPROVED METHOD. SILL
PLATES TO BE ANCHORED TO CONCRETE FOUNDATION WALL
WITH 1/ 2" DIA ANCHOR BOLTS AT MAX 8" FROM CORNERS
AND 4'-0" O/C OR OTHER APPROVED METHOD. EXTERIOR
SILL PLATES TO BE LEVEL AND THE UNDERSIDE SEALED.

3/ 4" FLOOR SHEATHING TO BE GLUED AND NAILED IN PLACE
USING PL - 400 ADHESIVE AND RING NAILS

FLOOR AREAS TO RECEIVE LINOLEUM FLOORING SHALL
RECEIVE 1 LAYER OF 3/ 8" K-3 BOARD SCREWED DOWN
OVER T&G SHEATHING

8X8 EXTERIOR TIMBER TO BE PINE



SCALE: 3/ 16" = 1'-0"	DRAWN BY: P HALPER / KS
DATE: 16 MAY 2012	REVISED:
BASIC COTTAGE I 24 X 24	
SECTION A-A	DRAWING NUMBER GL-008

GENERAL NOTES:

1. THESE DRAWINGS ARE THE PROPERTY OF HAVEN TIMBERHOMES & SHALL NOT BE REPRODUCED IN ANY WAY OR FORM WITHOUT THE DESIGNERS CONSENT

2. GENERAL CONTRACTOR, BUILDER SUB-TRADES & OWNER TO CAREFULLY EXAMINE THESE DRAWINGS & REPORT ANY ERRORS, OMISSIONS & DISCREPANCIES TO HAVEN TIMBERHOMES PRIOR TO CONSTRUCTION

3. ALL CONSTRUCTION TO CONFORM TO MOST RECENT ALBERTA BUILDING CODE & ALL LOCAL BYLAWS, REGULATIONS & CODES

4. DO NOT SCALE DRAWINGS

5. G.C. / BUILDER TO FAMILIARIZE HIMSELF WITH SITE & ALL CONDITIONS PERTAINING TO ERECTION OF BUILDING AS PER DRAWINGS

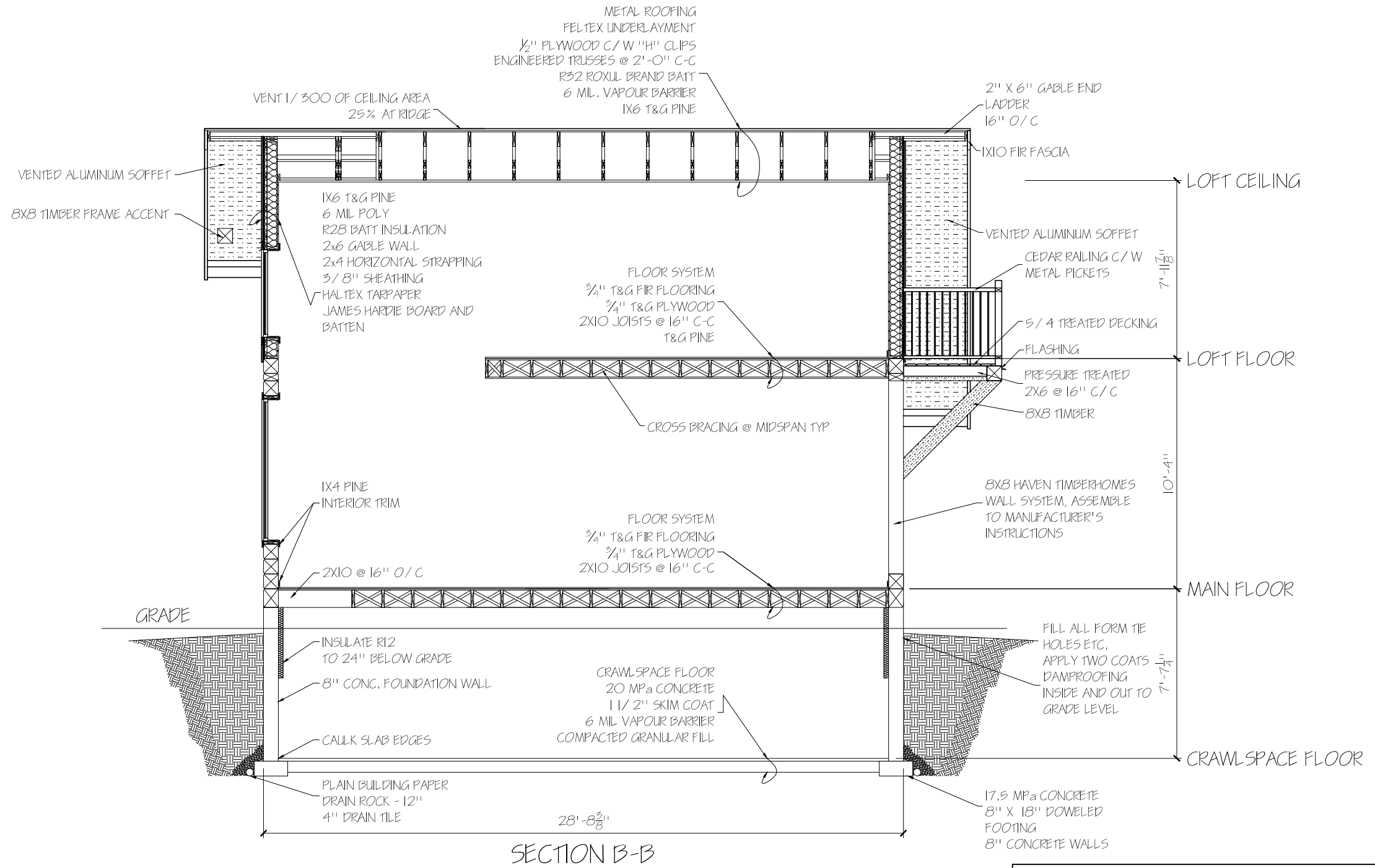
6. ALL DIMENSIONS TO O.S. FACE OF CONC. / O.S. FACE OF LOGS, CENTERLINE OF LOGS, OR CL. OF INTERIOR WALLS. OPENINGS DIMENSIONED TO CENTRE OF ROUGH OPENING

7. DOUBLE FLOOR JOISTS UNDER ALL INTERIOR PARTITIONS

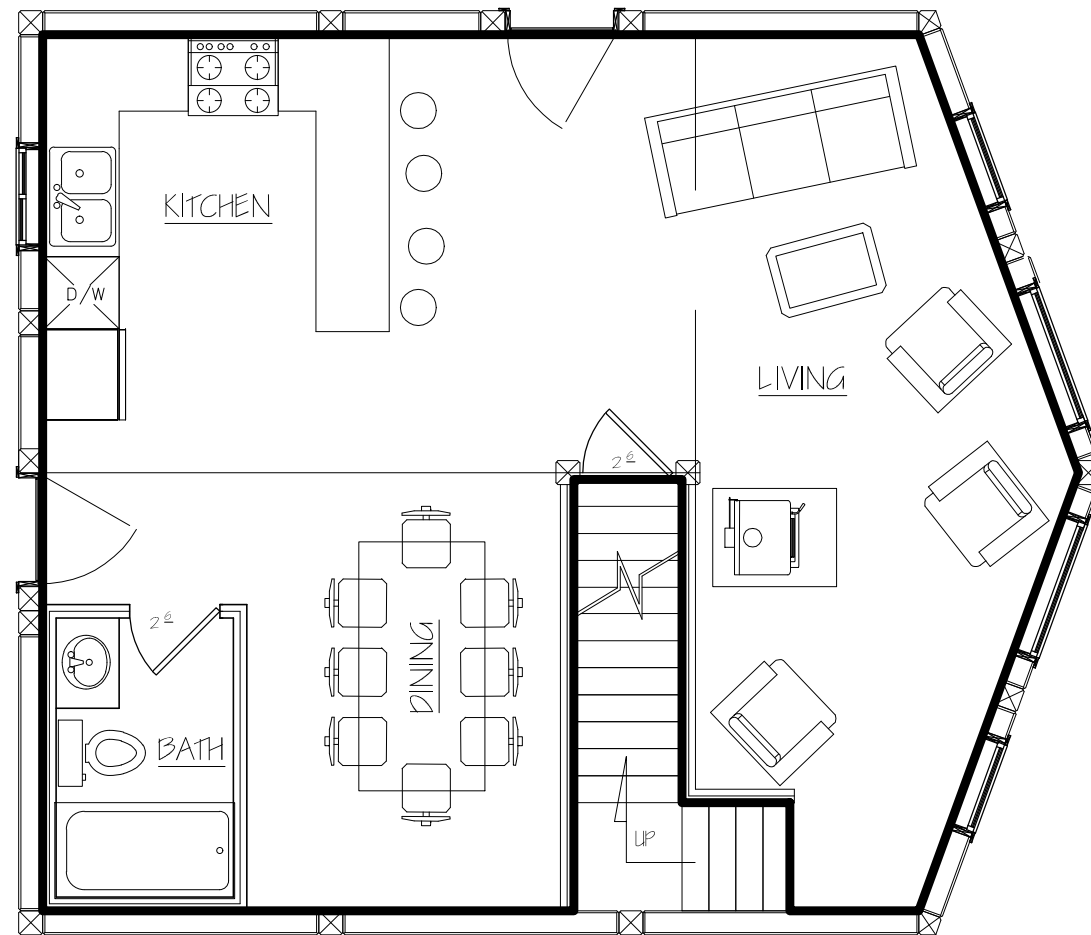
8. FOOTING SIZES TO BE CONFIRMED BASED ON FNDN. SOIL CONDITIONS AS DETERMINED BY BEARING INSPECTION BY SOILS ENGR

9. VERIFY ALL INFORMATION AGAINST TRUSS / JOIST SUPPLIER / MANUFACTURER & ENGR'S LETTER & / OR DRAWINGS. REFER TO ENGR'S LETTER FOR STRUCTURAL INFO. / CHANGES.

10. ALL MATERIAL USED FOR CONSTRUCTION SHALL BE NEW MATERIAL.



SCALE: 3/16" = 1'-0"	DRAWN BY: K STAIRS
DATE: 16 MAY 2011	REVISED:
BASIC COTTAGE 1 24 X 24	
SECTION B-B	DRAWING NUMBER AL-009



FLOOR PLAN
FLOOR AREA INSIDE 601 SOFT



SCALE: 3/16" = 1'-0" DRAWN BY: P. HALPER / K5

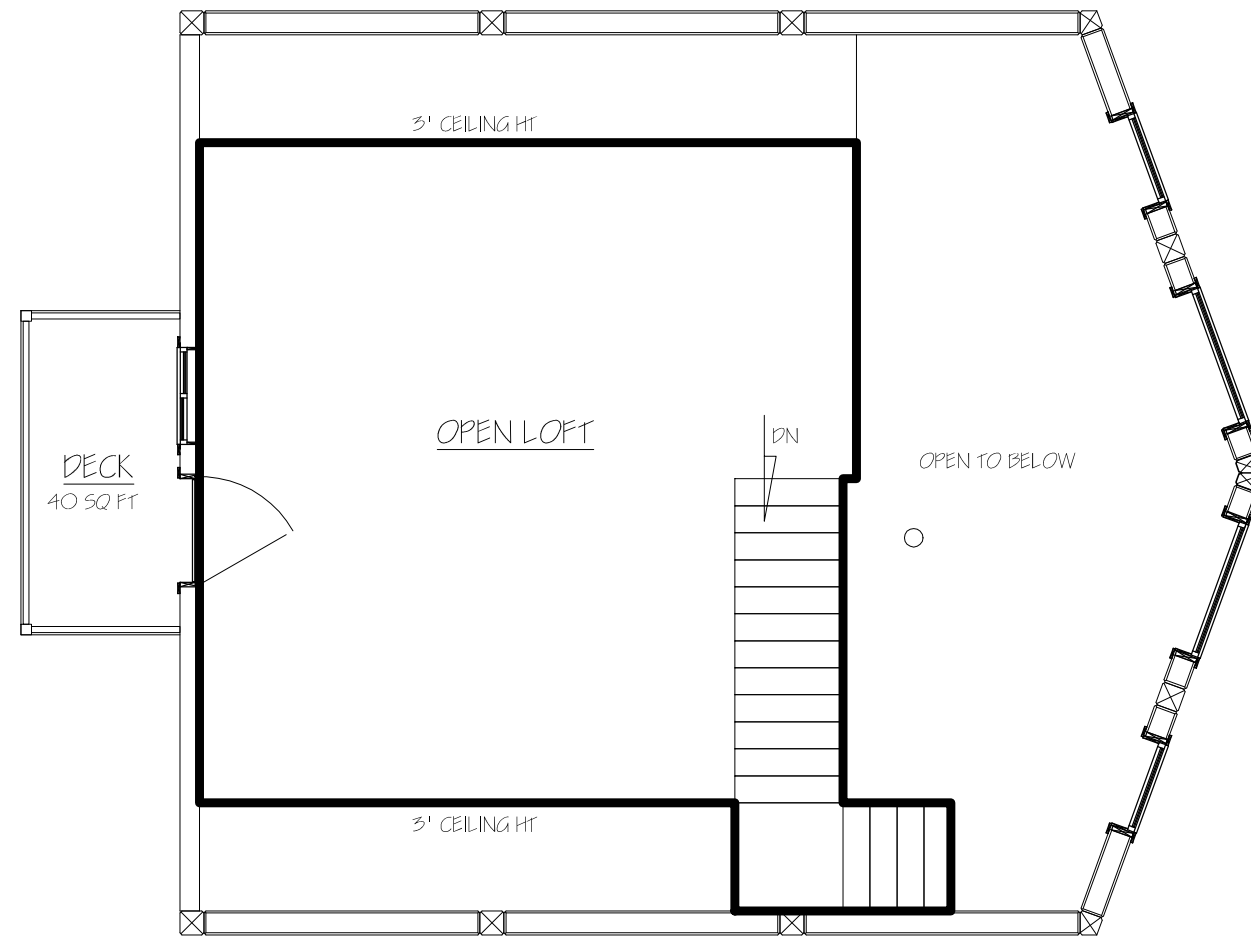
DATE: 16 MAY 2012 REVISED:

BASIC COTTAGE I

REV

MAIN FLOOR AREA

DRAWING NUMBER
AL-010



LOFT FLOOR PLAN
FLOOR AREA INSIDE 349 SQ FT



SCALE: 3/16" = 1'-0" DRAWN BY: P. HALPER / KS

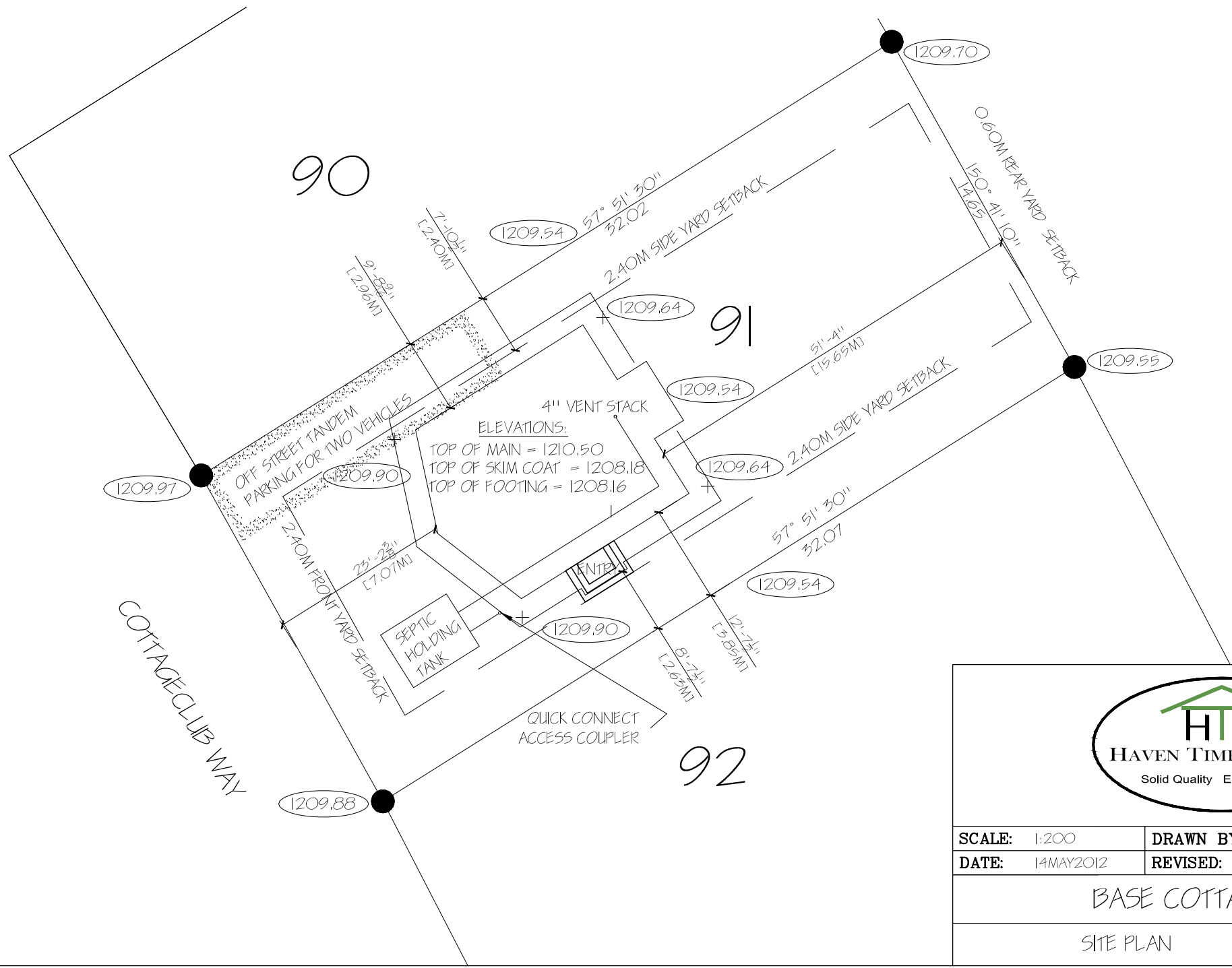
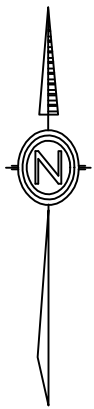
DATE: 16 MAY 2012 REVISED:

BASIC COTTAGE I

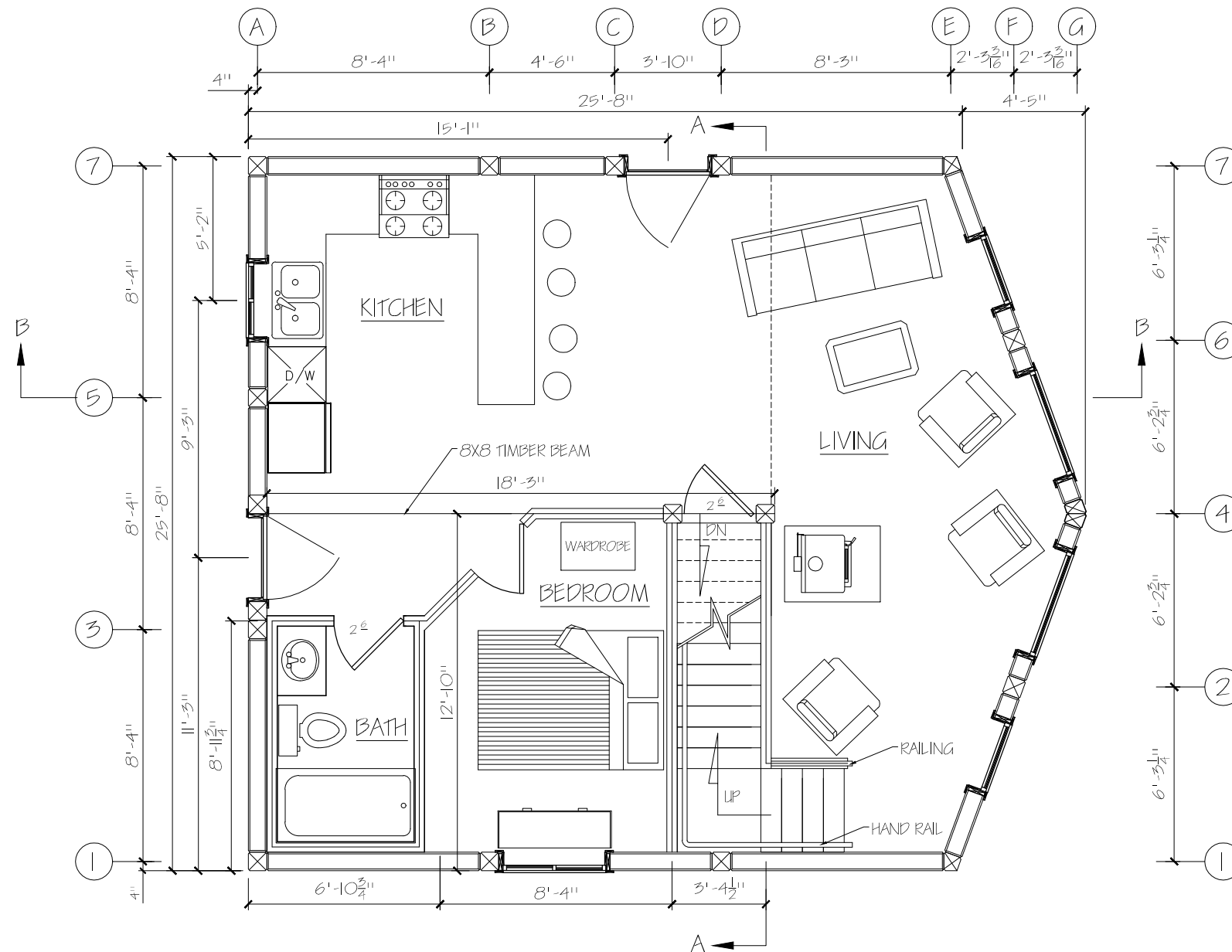
REV

UPPER FLOOR AREA

DRAWING NUMBER
AL-011



SCALE: 1:200	DRAWN BY: P HALPER / KS
DATE: 14MAY2012	REVISED:
BASE COTTAGE I	
SITE PLAN	DRAWING NUMBER AL-012
	REV



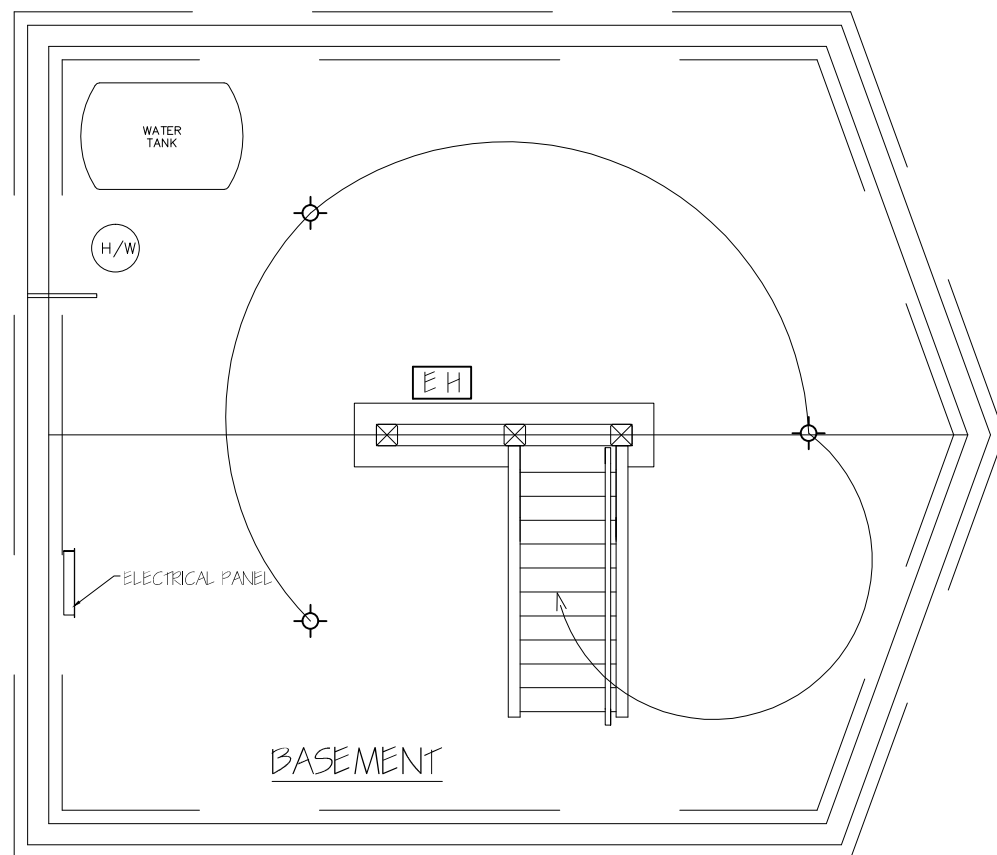
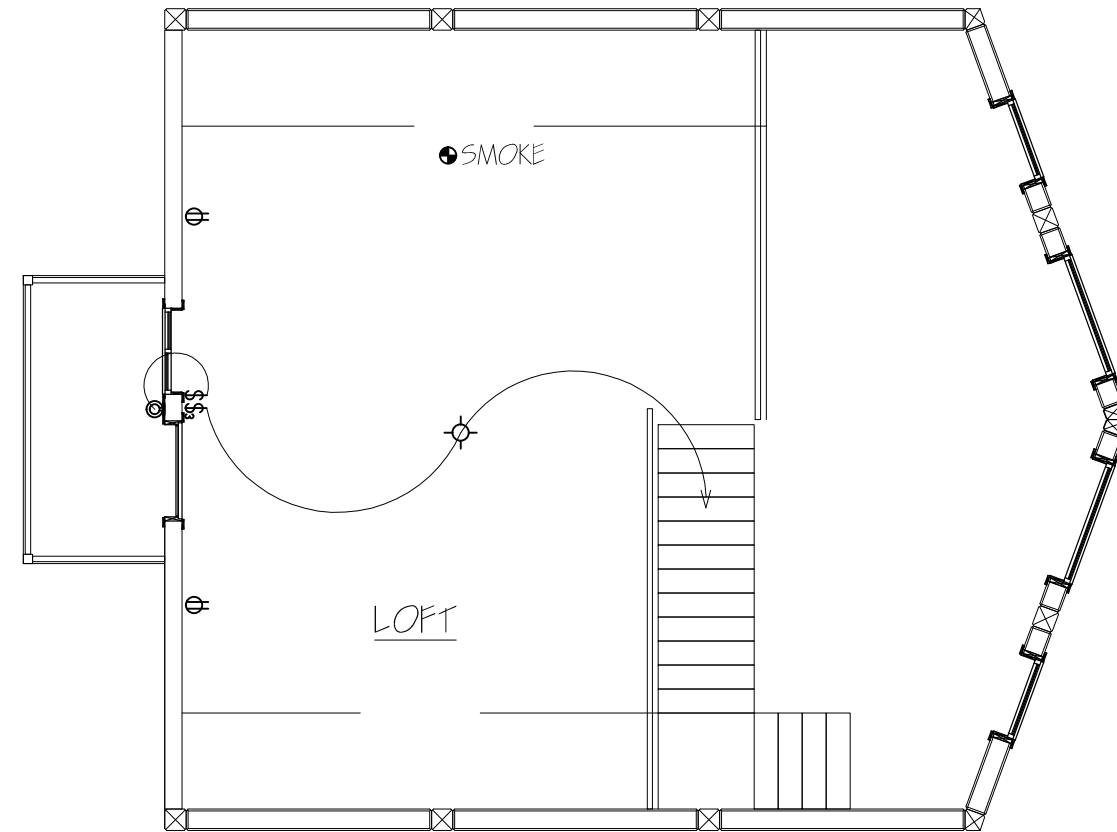
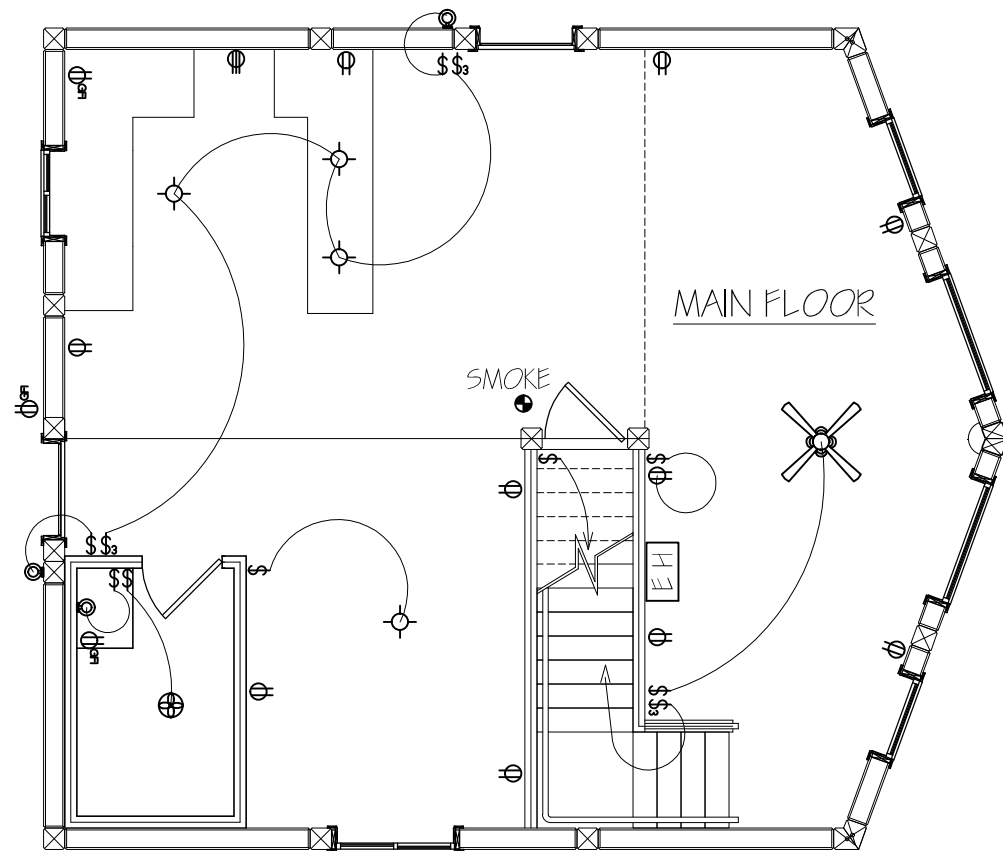
ALTERNATE FLOOR PLAN

FLOOR AREA INSIDE 601 SQFT



SCALE: 3/16" = 1'-0"	DRAWN BY: P HALPER / KS
DATE: 16 MAY 2012	REVISED:
BASIC COTTAGE I	
ALTERNATE FLOOR PLAN	DRAWING NUMBER AL-013

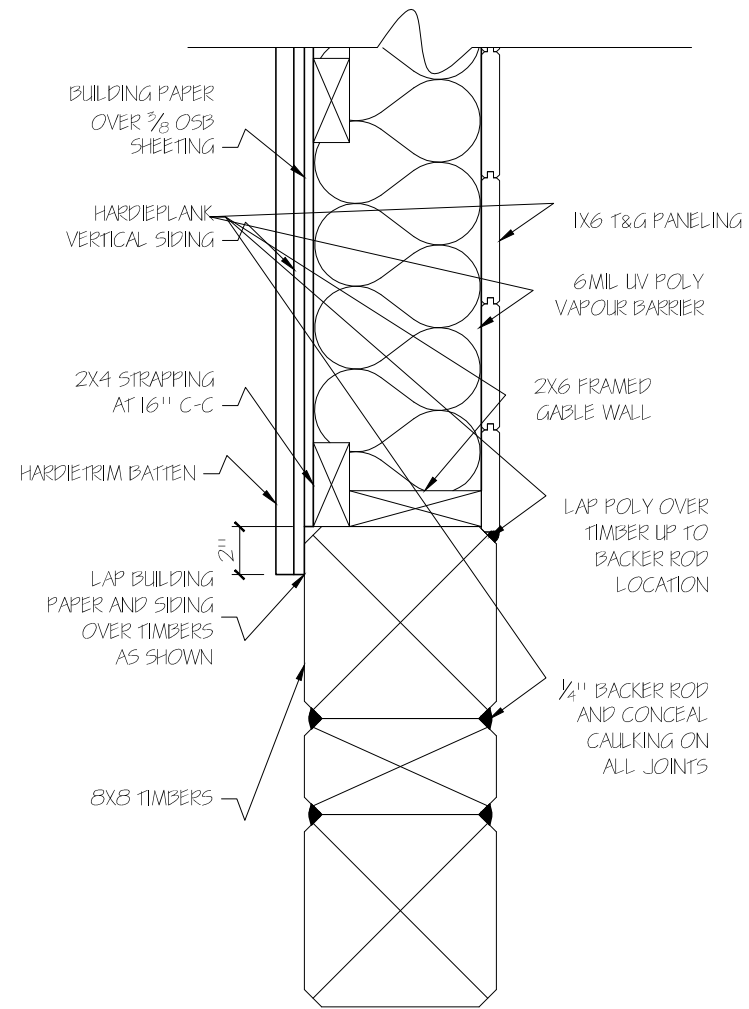
REV



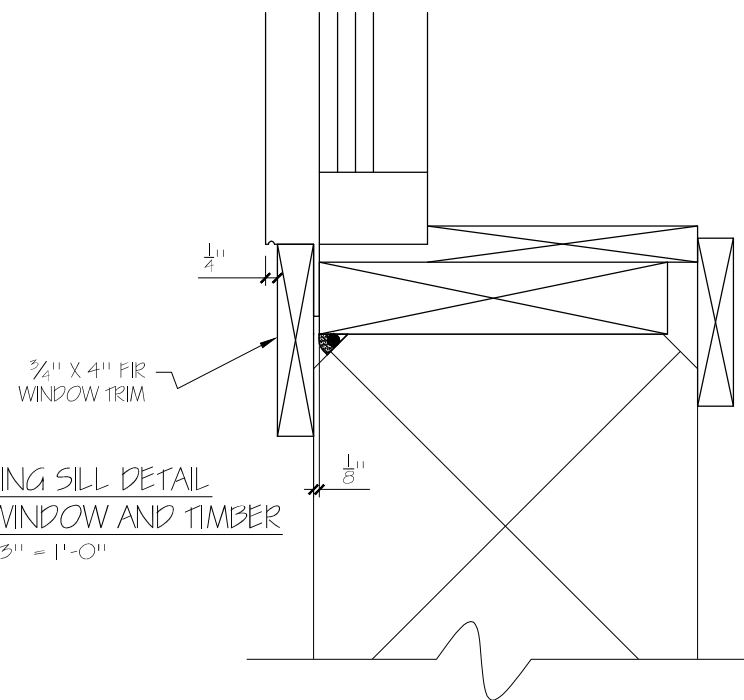
ELECTRICAL	COUNT	SYMBOL
ceiling fan spotlights 1	1	
ceiling globe light	0	
chandelier	0	
electric heater	2	
pot light	0	
single spotlight	0	
vanity bar light	0	
wall mount light	4	
fan	1	
light	8	
outlet	12	
outlet 220v	1	
outlet afi	3	
smoke detector	2	
switch	9	
switch 3 way	4	



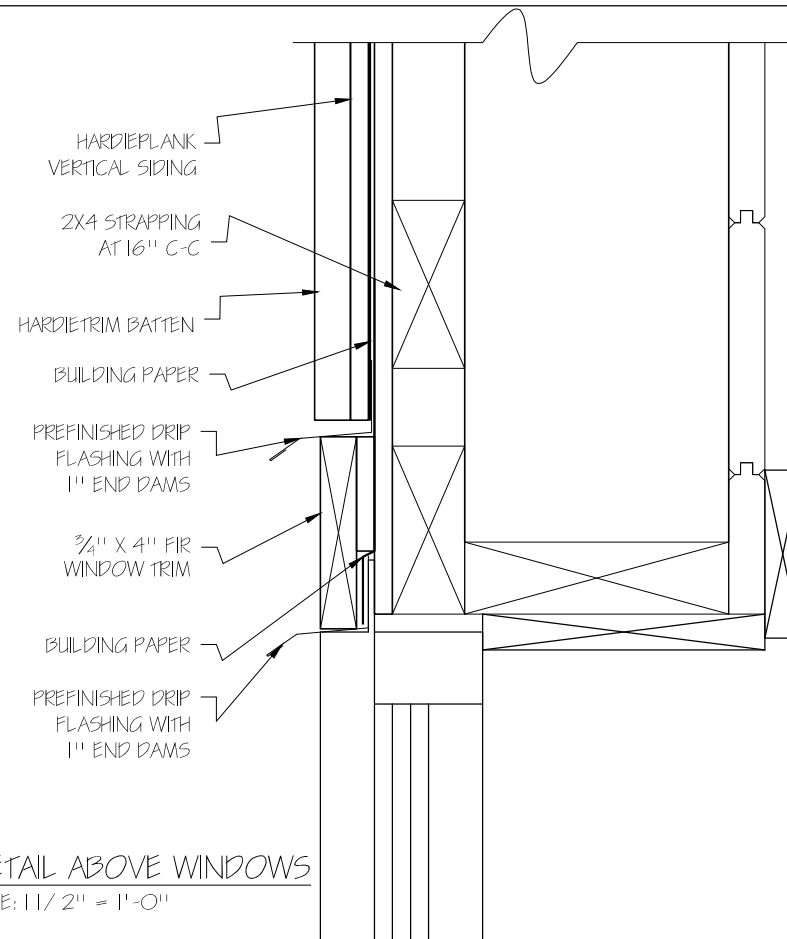
SCALE: 3/16" = 1'-0"	DRAWN BY: P HALPER / KS	REV
DATE: 28 MAY 2012	REVISED:	
BASIC COTTAGE I		
ELECTRICAL PLAN	DRAWING NUMBER	
	AL-014	



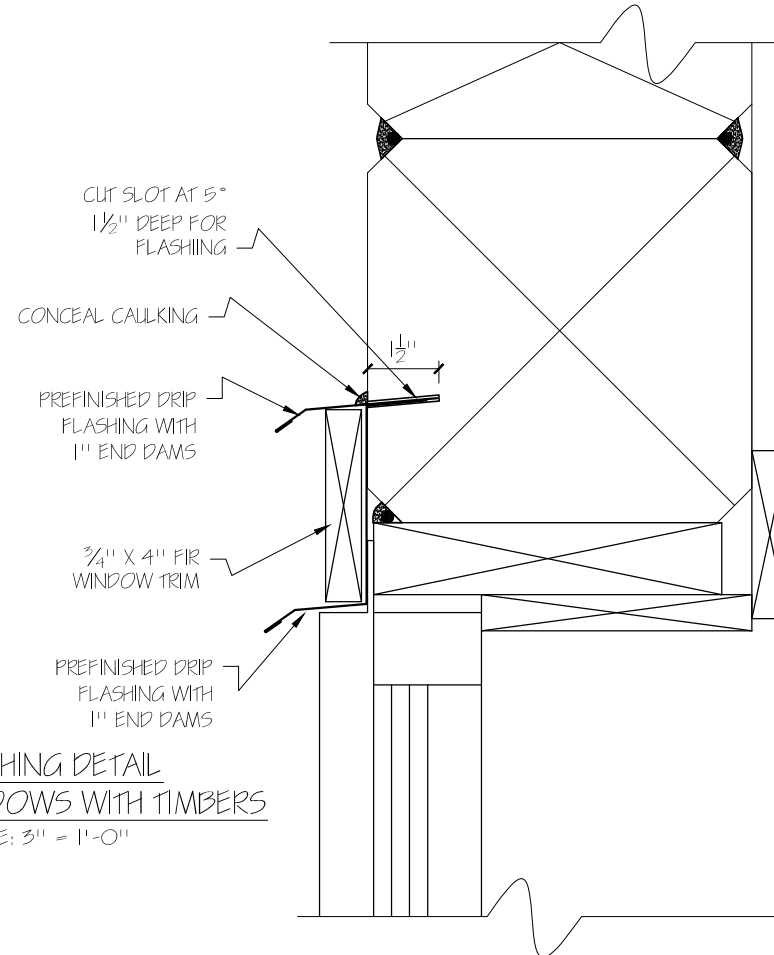
CLADDING TRANSITION DETAIL
SCALE: 1/2" = 1'-0"



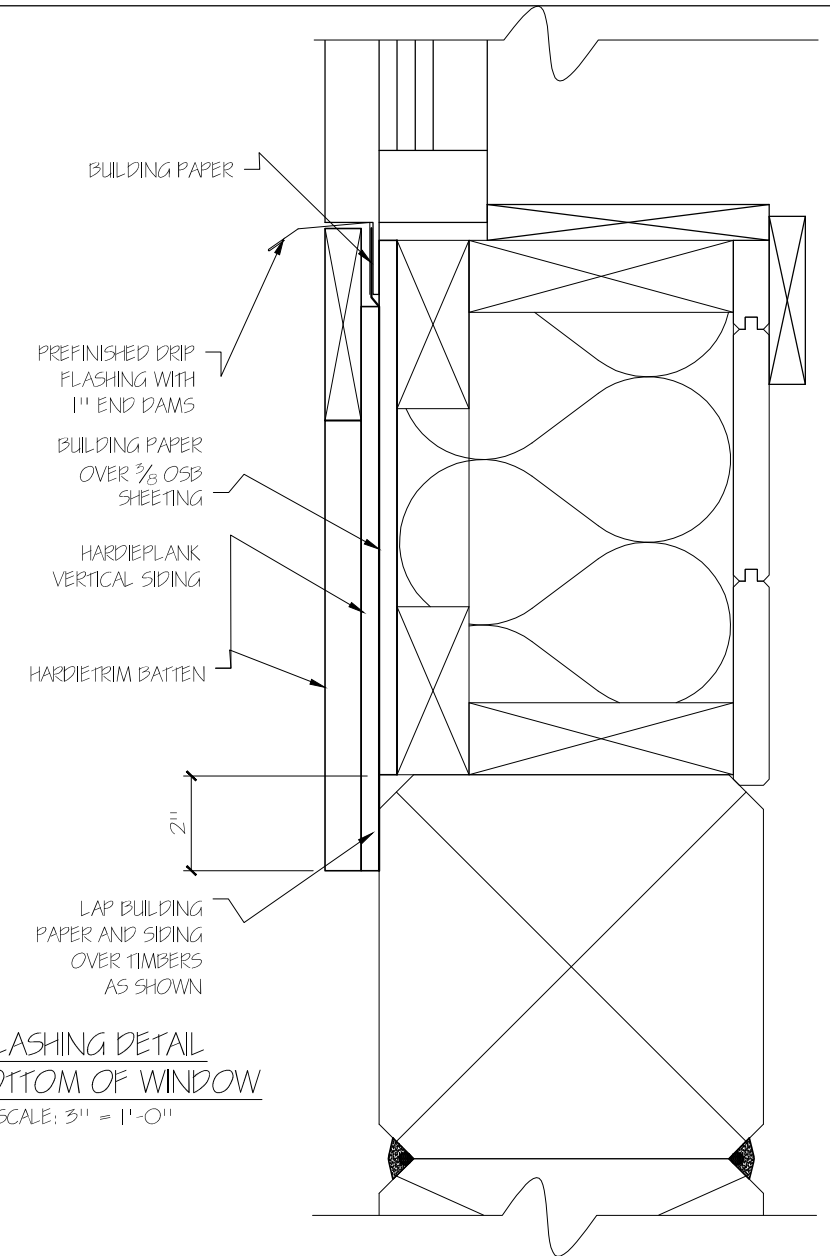
SELF FLASHING SILL DETAIL
AT BOTTOM OF WINDOW AND TIMBER
SCALE: 3" = 1'-0"



FLASHING DETAIL ABOVE WINDOWS
SCALE: 1/2" = 1'-0"



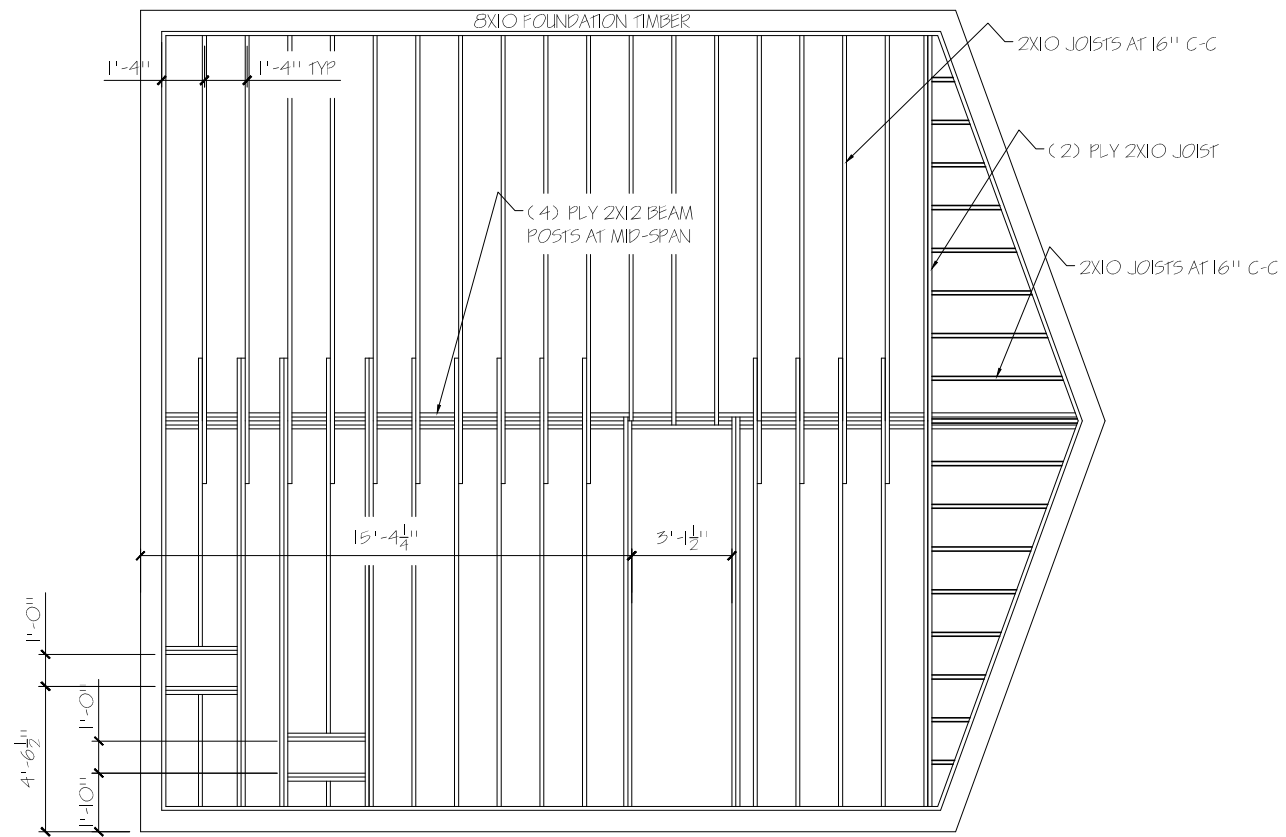
FLASHING DETAIL
ABOVE WINDOWS WITH TIMBERS
SCALE: 3" = 1'-0"



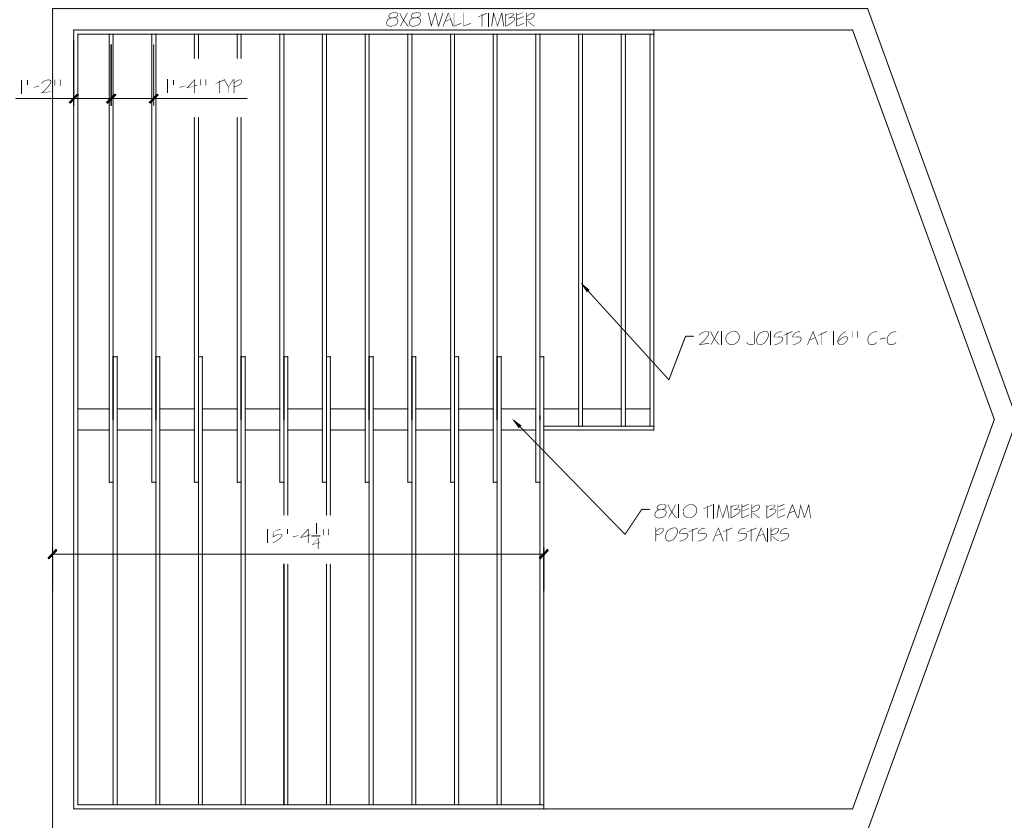
FLASHING DETAIL
AT BOTTOM OF WINDOW
SCALE: 3" = 1'-0"



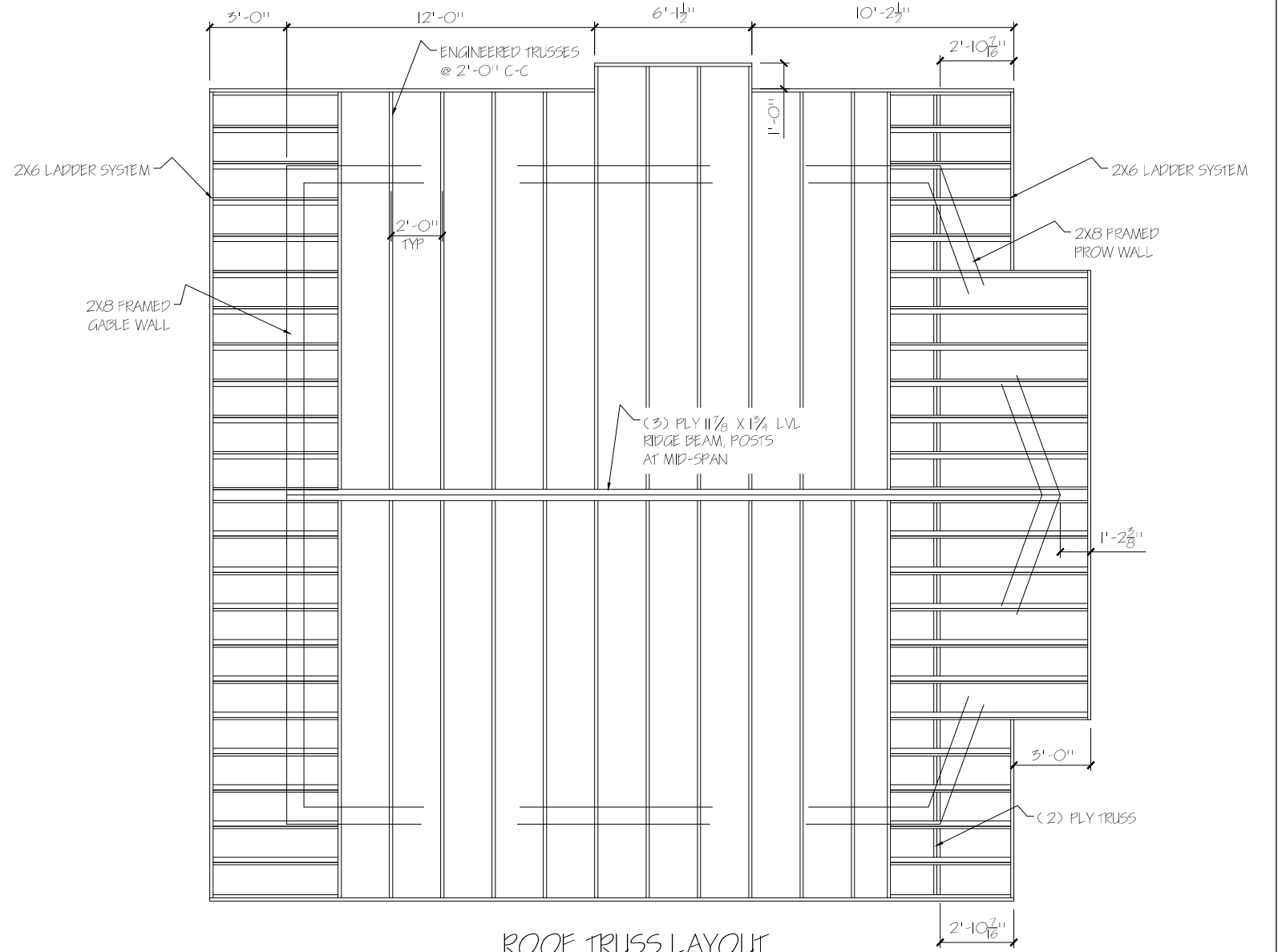
SCALE: AS SHOWN	DRAWN BY: P HALPER / KS
DATE: 28 MAY 2012	REVISED:
BASIC COTTAGE I	
FLASHING DETAILS	DRAWING NUMBER AL-016
	REV



MAIN FLOOR JOIST LAYOUT



LOFT JOIST LAYOUT

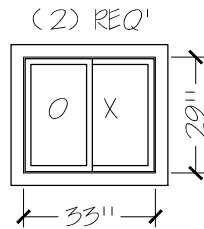
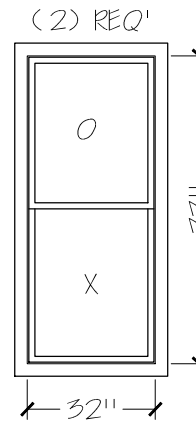
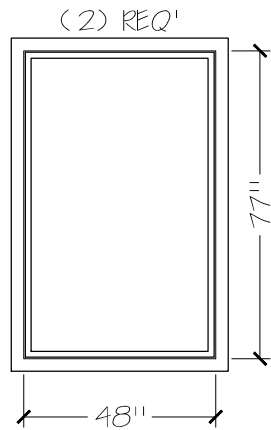
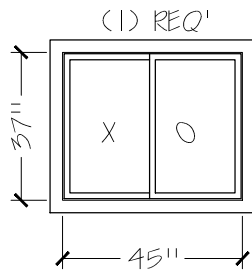
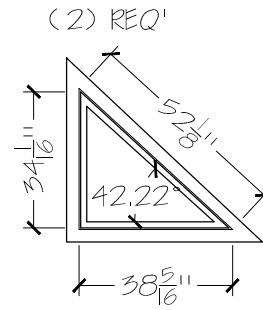
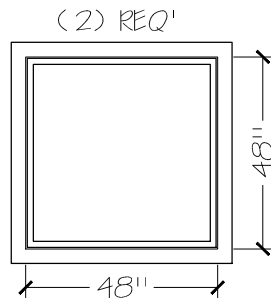
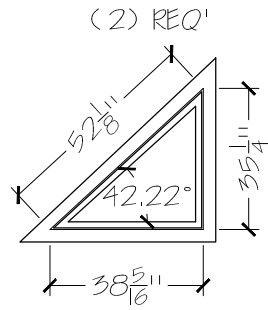


ROOF TRUSS LAYOUT



SCALE: 3/16" = 1'-0"	DRAWN BY: P HALPER / KS
DATE: 28 MAY 2012	REVISED:
BASIC COTTAGE I	
FLOOR JOIST AND TRUSS LAYOUTS	
DRAWING NUMBER AL-017	

REV



SCALE: 1/4" = 1'-0"	DRAWN BY: P. HALPER / KS
DATE: 4 JULY 2012	REVISED:
BASIC COTTAGE I	
WINDOW SCHEDULE	DRAWING NUMBER AL-017

REV